



LIBERA LAYERS

FACCO
POULTRY EQUIPMENT

The **LIBERA LAYERS** system was born due to the need to produce eggs in compliance with laws concerning “alternative” animals, keeping in mind the increasing consumer demand for high quality eggs laid by hens bred in cage free systems. Designed to guarantee high animal life quality standards, it offers improved performances and management costs when compared to traditional systems



The alternative LIBERA cage free system allows the animal to fly and move.

The **Libera Layers system** is highly flexible, as it can be developed on one or two floors according the client’s objectives. The structure design facilitates access to the second floor, therefore guaranteeing maximum use of the available space.

Facco is by your side from the creation phase to managing the production plant.



Strengths:

- **Accessibility**
- **Flexibility**
- **Maximum use of available space**

FEEDING SYSTEM

The flat chain feeding system, introduced by Facco during the 1970s, is ideal for feed distribution in commercial layer-house hen laying and farming systems. It is safe and reliable.

Its various speed options allow it to adapt to all types of production plants, guaranteeing high feed distribution performances.



DRINKING SYSTEM



The FACCO drip troughs are functional and precise, guarantee waste-free high water supply performances and are ideal for all types of animals. Furthermore, our vast range of products allows for customization of the number of nipples in relation to the number of animals present in the structure.

- Our drinking system lines are completed by:**
- **pressure regulators**
 - **discharge unit with integrated cleaning system**
 - **filters**
 - **medication dosing systems**
 - **litre-counters and accessories**



PERCHES

The perches allow the hen to **safely anchor** to facilitate its movements within the system and reach each level with ease. The special 45° tilt allows for movement from one level to the next and across various areas of the perchery

This helps to develop mobility and ensures productivity

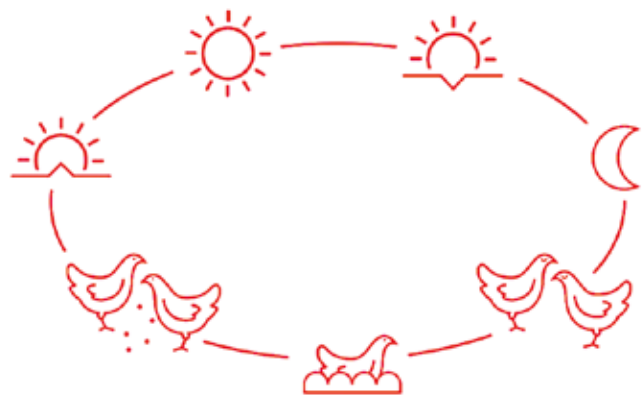


An innovative design, a solid, stable structure with a smooth and even surface which allows for optimal cleaning.

LIGHTING SYSTEM

Lighting is a key element in farming plants, given that it determines the correct **physiological balance** and regulates the movement of animals within the structure.

The use of LED lamps ensures **optimal regulation** of luminous intensity in addition to excellent **energy savings**.



The system, which can be programmed automatically, reproduces the typical day in a hen's life and a correct routine in its life cycle.



NESTS

The nests, delimited by the end wall and by the curtains, are a **tranquil space** that is separated from adjacent areas. This allows the hens to lay their eggs in total **serenity**. The gentle slope at the base allows for **prompt** collection of the eggs. The nests are installed at the centre of each module and are present on each level.

The set-up and conformation of the nests allows to avoid the loss or breakage of eggs, without causing overcrowding-related stress. **The hen can indeed complete its life cycle on each level**, even when facilitated in movement from one level to the next.



The **nest floor** is a soft AstroTurf mat, with a conformation that impedes the accumulation of dust, feathers or faeces, while offering a **natural sensation** for the hen's feet and favouring the circulation of oxygen. Therefore, it creates a **clean** and **comfortable area** for the laying of eggs.



EGG COLLECTION

The slight tilt of the footrests leads the egg to gently slide towards the collection belt, which is made of perforated polypropylene, a material which facilitates **cleaning operations**. The eggs are kept in balance and reach their destination in stable conditions and rapid times, **minimizing breakage issues**.

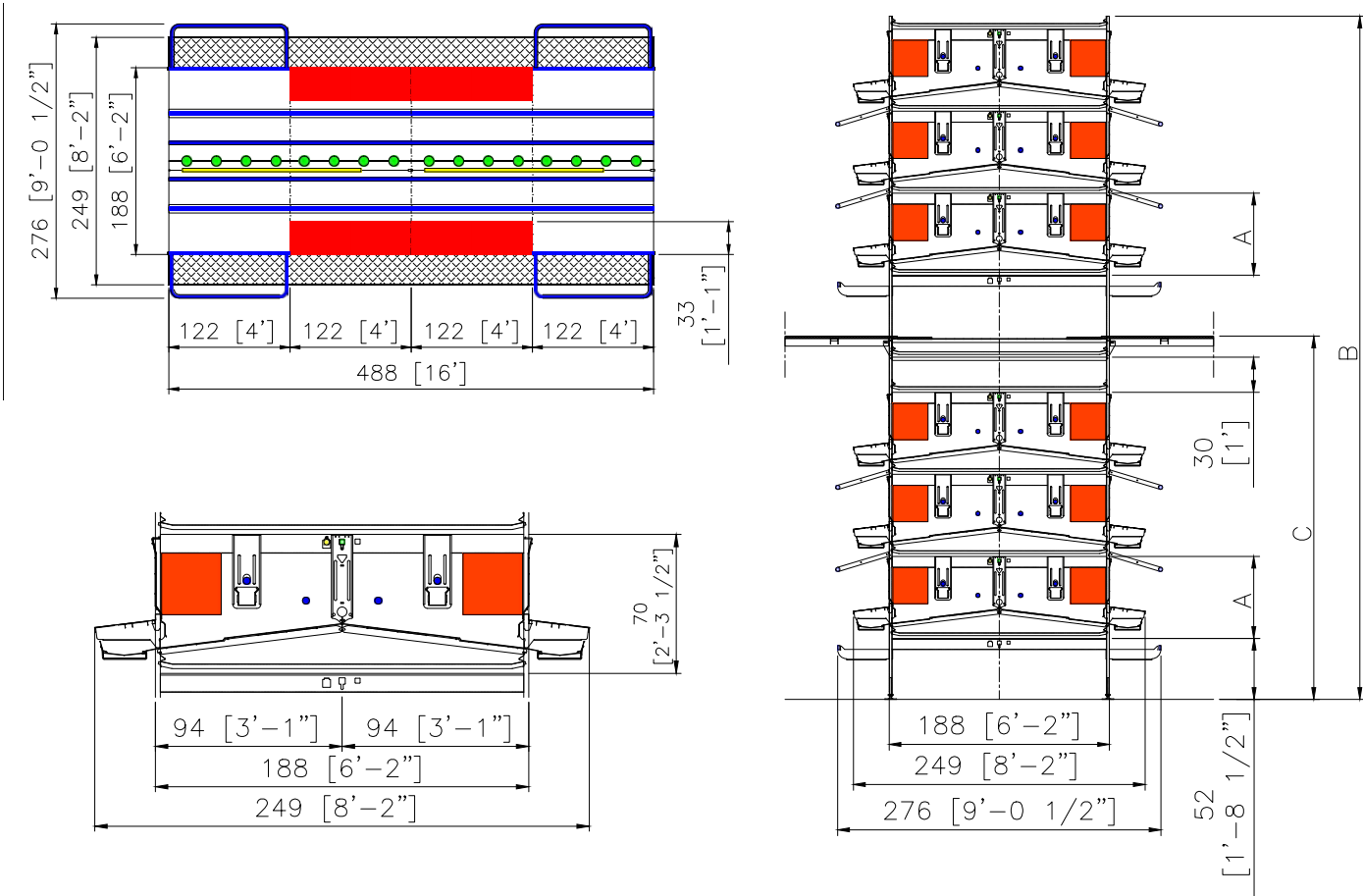


Speed can be customized according to the quantity of eggs, facilitating collection by the operator. The Facco **NIAGARA – The original** – egg collection system seamlessly combines **collection speed, durability, reliability, low consumption levels, low and simple maintenance** and above all a **delicate processing of the eggs**, an essential feature for minimizing micro-fractures. Each movement has been designed with attention and expertise, translating into one of the most-imitated designs in this sector.

TECHNICAL FEATURES
 LIBERA LAYERS

“LIBERA 94-70” a has been thought to satisfy international contemporary rules, due to its flexibility of its technical aspects it permits to find different ways of solutions, in respect to the actual rules and international guidelines more restrictive (EU1999/74/CE - UEP - HFAC - AHC).

“LIBERA 94-70”	cm.	in.
MODULE CAGE DIMENSIONS	488x94	192x37
EXTERNAL DIMENSION AREA SUITABLE	249	98
FEEDING TROUGH / MODULE	488	192
N° NIPPLES / MODULE	8	8



	A = 70			
	B		C	
	cm	ft	cm	ft
2 TIERS	203	6 2/3	-	-
3 TIERS	273	9	-	-
2 + 2 TIERS	443	14 1/2	240	7 7/8
3 + 2 TIERS	513	16 5/6	310	10 1/6
3 + 3 TIERS	583	19 1/8	310	10 1/6
3 + 3 + 2 TIERS	823	27	620	20 1/3
3 + 3 + 3 TIERS	893	29 2/7	620	20 1/3

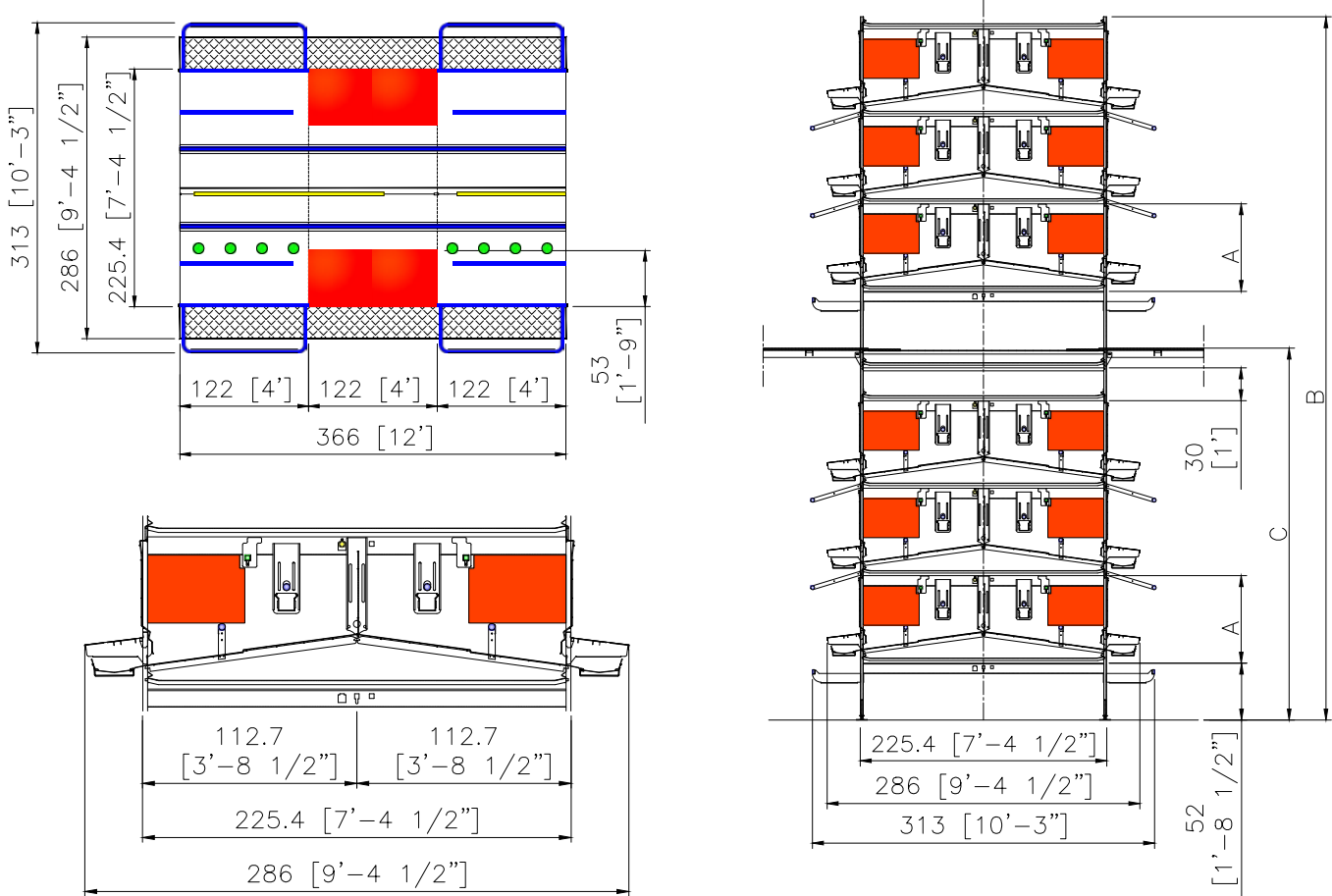
- Key
- PERCHES
 - FEED THROUGH AREA
 - DRINKERS
 - NESTS

Note: as well as the length of the Aviary modules, in the facility one must consider a number of excess metres for cleaning heads, battery heads and in the case of laying hens, also in the egg-collection area.

TECHNICAL FEATURES
 LIBERA LAYERS

“LIBERA 112-72/80” a has been thought to satisfy international contemporary rules, due to its flexibility of its technical aspects it permits to find different ways of solutions, in respect to the actual rules and international guidelines more restrictive (EU1999/74/CE - UEP - HFAC - AHC).

“LIBERA 112-72/80”	cm.	in.
MODULE CAGE DIMENSIONS	366x112,7	144x44
EXTERNAL DIMENSION AREA SUITABLE	286	112,6
FEEDING TROUGH / MODULE	366	144
N° NIPPLES / MODULE	8	8



	A = 72				A = 80			
	B		C		B		C	
	cm	ft	cm	ft	cm	ft	cm	ft
2 TIERS	207	6 4/5	-	-	223	7 1/3	-	-
3 TIERS	279	9 1/7	-	-	303	10	-	-
2 + 2 TIERS	451	14 4/5	244	8	483	15 6/7	260	8 1/2
3 + 2 TIERS	523	17 1/6	316	10 3/8	563	18 1/2	340	11 1/6
3 + 3 TIERS	595	19 1/2	316	10 3/8	643	21	340	11 1/6
3 + 3 + 2 TIERS	839	27 1/2	632	20 3/4	903	29 5/8	680	22 1/3
3 + 3 + 3 TIERS	911	29 8/9	632	20 3/4	983	32 1/4	680	22 1/3

Note: as well as the length of the Aviary modules, in the facility one must consider a number of excess metres for cleaning heads, battery heads and in the case of laying hens, also in the egg-collection area.



FACCO

POULTRY EQUIPMENT

OFFICINE FACCO & C. S.p.A.

Via Venezia, 30
35010 Marsango (PD) Italy

Tel. +39 049 9698111

Fax +39 049 9630605

facco@facco.net

www.facco.net

