

FACCO

POULTRY EQUIPMENT



Smart
Farm

FACCO

poultry equipment

Facco, a leading player on the global market for over 60 years with a full range of **cutting edge poultry systems**, combines metalworking, livestock and electronic know-how.

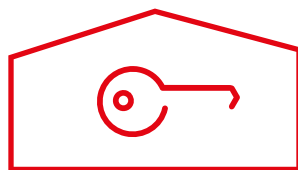
It has always developed **product evolutions** anticipating market transformations, thanks to the strong expertise developed in more than 70 countries and being in close contact with its customers.

Specialised in **Turnkey solutions**, Facco works alongside you, firstly in the design and construction stage, then in the analysis and operation of the systems through the most advanced technologies developed with a view to achieve the total integration of every element.

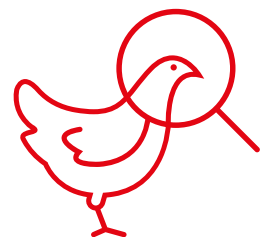
Smart Farm avails of innovative **farm control systems** as well as an assistance service that includes analysis and Business Intelligence activities. In fact, for over a decade, the remote-control feature has represented the driver of innovation and our orientation toward the Industry 4.0.



Partners,
not Suppliers



Turnkey
Solutions



We know
your chickens

SMART FARM

your smart farm made in Facco

FACCO has developed a **high-tech system** that is completely integrated with our Turnkey solutions, that makes it also possible to remotely manage and control the systems.

Facco manufactures the entire system especially for you, from the electrical design, the production of controller units, right up to the final testing and the after-sales management. There are 3 components that can dialogue in the **Smart Farm**: the control units SmartOne and Smart2 for controlling the system, the Smart Black Box connection that provides system monitoring and the Facco Portal that provides storage, analysis and service.

1

TOTAL
INTEGRATION

2

CONTROL
AND SAFETY

REMOTE
MANAGEMENT

3

BUSINESS
INTELLIGENCE

4

SERVICE

5



Smart Farm

CONTROL



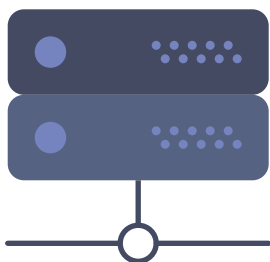
Temperature
control

Feed control



Egg collection
control

Smart2

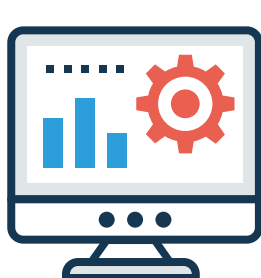


Backup
and restore

Facco
Portal

Remote
control

Smart
Black Box

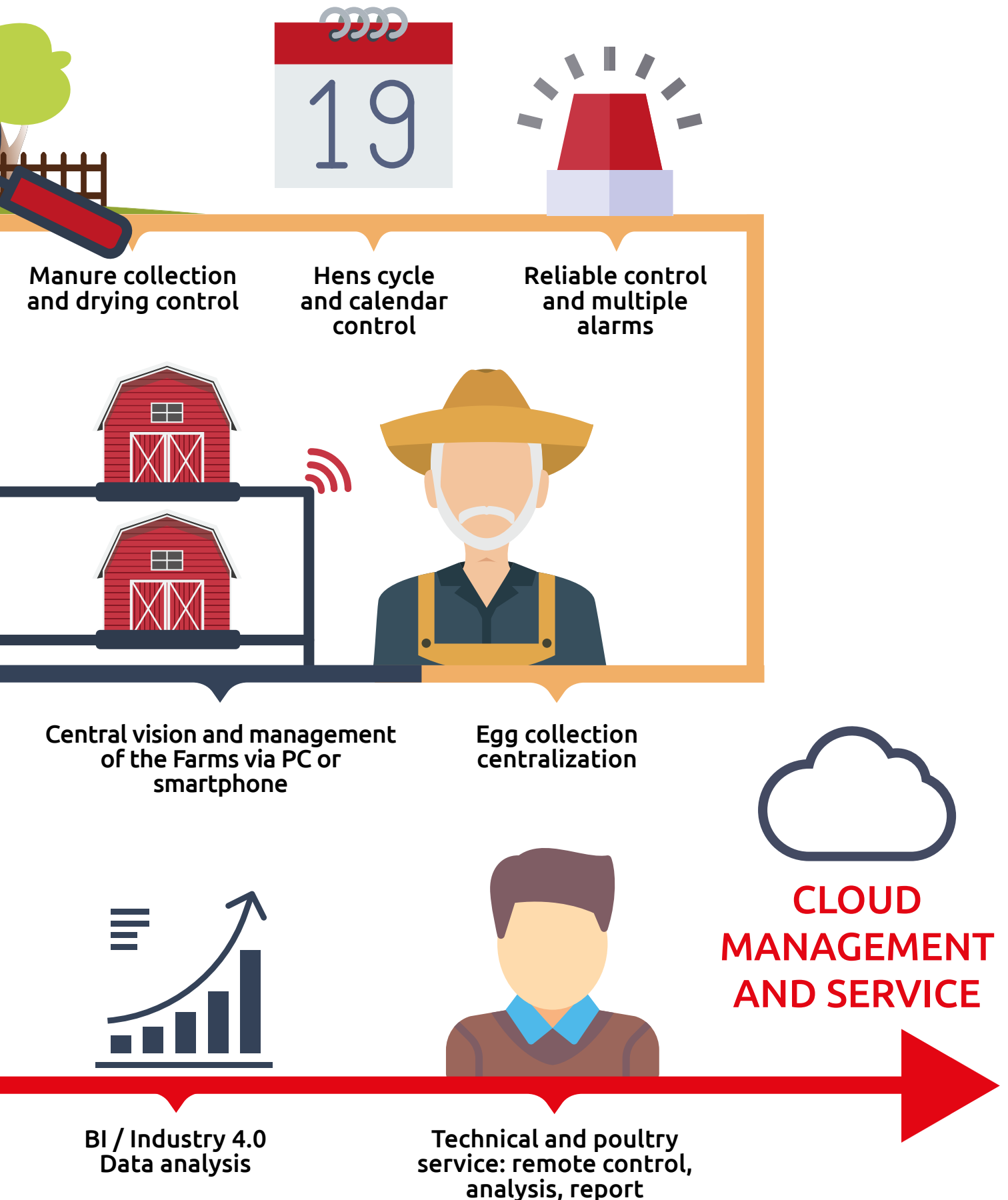


All data at your
service

Farm managing

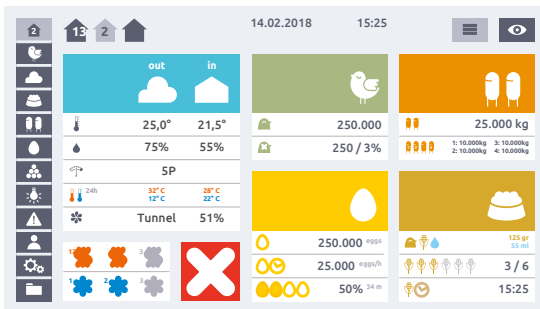
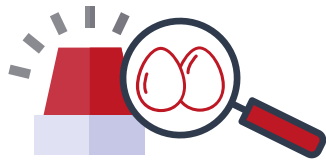


FACCO
POULTRY EQUIPMENT



SMART2

Advanced control



The Smart Black Box is **the connection point between the system and the world**: connect the control unit to a corporate network or to the internet. By means of a simple, straightforward interface for computers or devices, the user can effectively and safely control the systems.

By tracking the critical changes made to the initial configuration, it is also possible to save and restore all archived parameters, **facilitating the management** of the several flocks, ensuring an easy system restore in case of disaster.

The detected parameters are **recorded and translated in real time** into graphs and tables, giving an overview of the situation, making possible also to export all the relative historical storage. Immediate alerting through several levels of contact allows the cause of the problem to be identified right away.

Smart2 is the **latest generation** control unit that integrates all functionalities for the automatic management of poultry system. The highest reliability and portability complement each other with a multi-level system of redundant and prompt alarms to identify and transmit any problems that may arise.

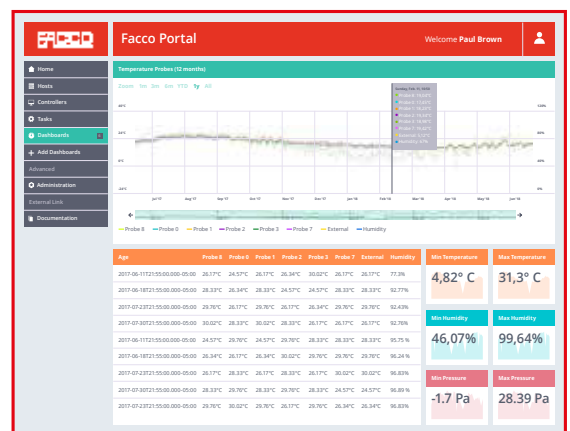
Smart2 software is made in Facco and is **designed to achieve the maximum integration** with existing systems and evolutions, thanks to constant implementation and upgrades.

The interface enables the management of a simple, straightforward system right after the installation. The management details of the various controlled systems are only accessible by authorised personnel.

If connected to the internet, Smart2 **can automatically connect itself** to the Facco Portal through the Smart Black Box and therefore benefit from all the functions and services it provides.

SMART BLACK BOX

the key to IoT



FACCO PORTAL

The door to the Smart Service



The 10-year experience gained by Facco within the sector as well as the creation of perfectly integrated Turnkey solutions has enabled us to develop advanced expertise also in the system customisation.

The Smart Farm has been **entirely made in Facco**, from its hardware to its software, from the control units to management systems.

This, combined with the ability to create systems in any weather conditions whatsoever, our global presence in over 70 countries as well as the constant dialogue with our customers, makes us the ideal partners for customisations that fulfil even the most demanding requirements.

Contact us! We will create the most suitable solution to meet your control and business needs.

FACCO Portal is a web application that can **Monitor, Manage, Protect and Analyse** all data and information collected in the Cloud. Everything is stored safely and confidentially, providing an advanced management of the Smart Farm for each and every cycle, system and farm.

The **management and continuous improvement** of the poultry system performance becomes easier through the data analysis. The portal provides a continuous comparison in relation to the old cycles expected average performance values released by the breeders, anomalies and opportunities of improvement are rapidly intercepted.

Facco Service team's specialized personnel, present in the various geographical areas, is available 24/7 to verify in real time the correct behaviour – through Smart Black Box and Facco Portal – of the systems and the devices given the current customers settings and **extremely short** intervention times are guaranteed, always. This results in optimised performance reduction of management costs. Furthermore, we support the Farm Manager by providing a Business Intelligence service, in order to receive advice and be constantly in contact with Facco.

CUSTOMIZATION

tailor-made for you





FACCO

POULTRY EQUIPMENT

OFFICINE FACCO & C. S.p.A.

Via Venezia, 30

35010 Marsango (PD) Italy

Tel. +39 049 9698111

Fax +39 049 9630605

facco@facco.net

www.facco.net