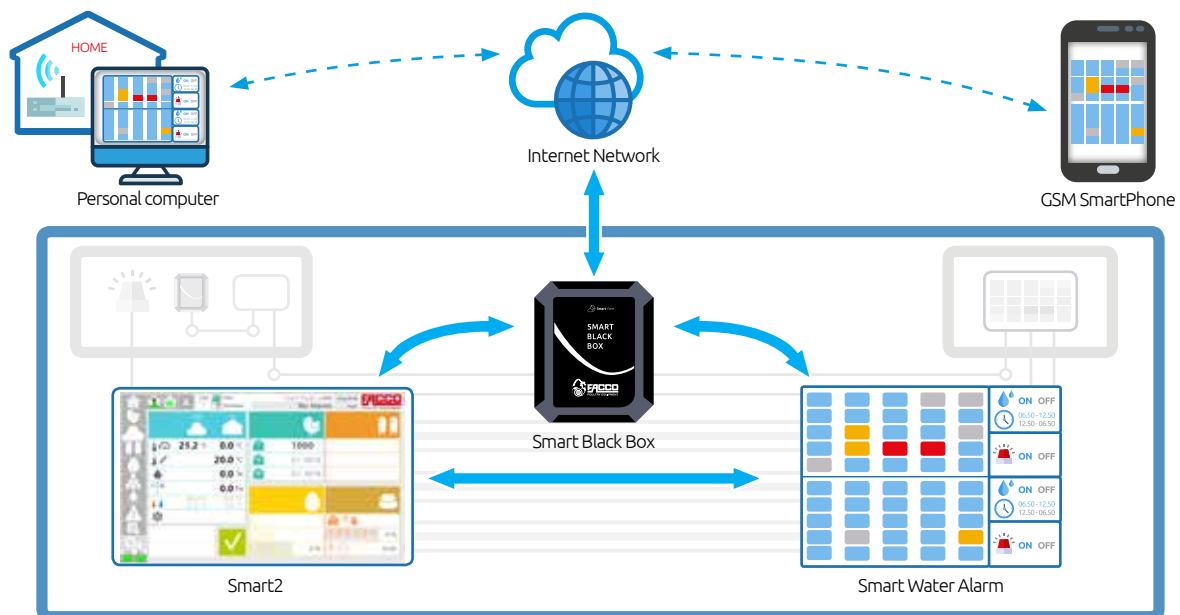
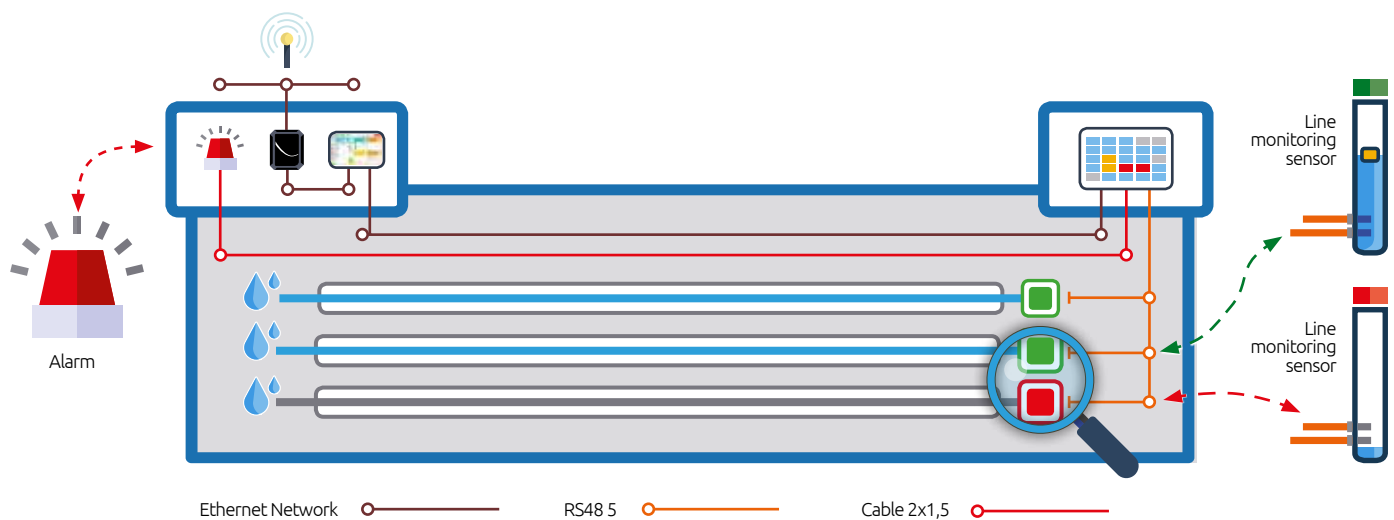


SMART WATER ALARM

Customizable control

The Smart Water system monitors the presence of water in each watering line and activates an alarm alert in the absence of water in a line.

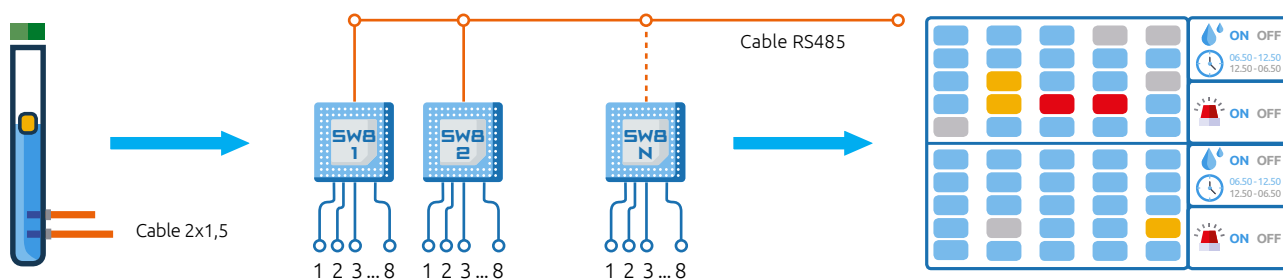
Smart Water also stores all the alarms and momentary interruptions that may occur during the day in each line, thereby enabling the quality of the watering system to be analyzed in general terms and in each line.



Smart Water can monitor three "Sectors" or "Levels" independently.
The following functions can be performed for each Sector:

- Enabling or Disabling the monitoring function of all the lines in a sector.
- Setting monitoring time slots outside which the alarm system is disabled.

Smart Water Alarm handles each monitored **Watering Line** independently. The system functions by means of a sensor installed at the end of each monitored line and connected to a control module. There are **no limits** to the number of lines that can be monitored.







Smart Water Alarm

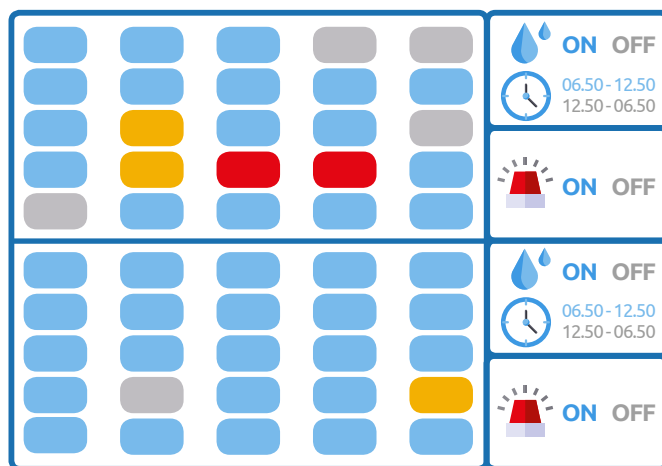
Functions

Smart Water Alarm can:

- Display the state of the line in real time:

	H₂O	Water present
	Disabled	Alarm Disabled
	Silent mode	Line without water with Alarm Disabled
	Alarm	"No water" Alarm

- Signal and transmit the "no water" alarm for each water line monitored.
- Automatically enable and disable the alarm signal during certain time slots or if one of the lines is out of order.
- Provide a log file of the last week of alarms.



- As well as all the SBB functions, Smart Water Alarm can also control Smart2 Std remotely if connected to a Smart Black Box.
- When connected to the Internet, it can transmit the alarm and report via email and access the control module directly from devices or remote PCs.

Your Smart Farm Made in Facco