

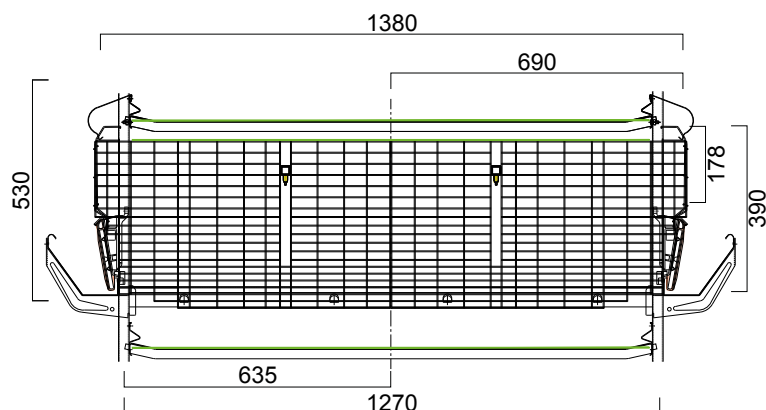
**P80**  
**BATTERY**  
**CAGE**

**FACCO**  
POULTRY EQUIPMENT

## P80 BATTERY CAGE

FACCO battery cages are distinguished by the following elements that ensure outstanding quality:

- the possibility to house the birds at every tier of the battery cage from the first day of life;
- the scrupulous design of the cages that facilitates all breeding operations, and in particular, the housing and the removal of the birds;
- the careful design of every part of the cage that eliminates the presence of points of dirt accumulation and parasite proliferation;
- the use of a “support leg” with a stiffened section that gives the entire structure greater strength;
- the use of the right materials provided with surface treatments formulated for resistance to frequent washing;
- extremely precise feed dispensing for optimized consumption and minimum waste.



P80 Battery



## P80 BATTERY CAGE

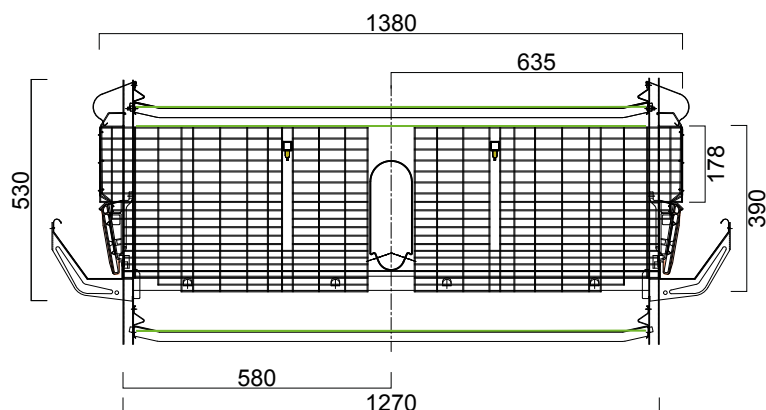
The P80 battery cage can reach up to 150 meters in length and a height with the overlapping of up to ten tiers. A polypropylene belt inserted between each level of the battery collects and removes the manure onto a transversal conveyor belt that carries it out of the shed.

P80 battery cage is also available in an **ECO version** equipped with a manure drying tunnel.

The drying tunnel has holes from which jets of air are directed evenly over the manure removal belt.



For the greater comfort of the birds in the initial phase of life, a plastic grating can be applied to the footrest in order to adjust the surface to the size of the birds' feet and even a screen of finer mesh that provides greater support during the first days of life.



P80 Eco Battery

## P80 BATTERY CAGE

### CHAIN FEEDING

Feed is distributed by means of a flat chain with variable speed.

The section of the trough used together with this feeding system has been carefully studied for enhanced performance.



### TROLLEY FEEDING



Feed is distributed by means of a self-propelled trolley pulled by a steel cable.

The combination of a **leveling device designed expressly for the purpose** with a trough built specifically for pullet battery cages permits extremely precise feed distribution that can be adjusted as required – a key feature in guaranteeing uniform feed distribution, especially in the first days of life.





## P80 BATTERY CAGE

### FEED ANTI-WASTE SYSTEM

Access to the trough can be facilitated by means of an adjustable metal section as required by the age of the animals.



### DRINKING

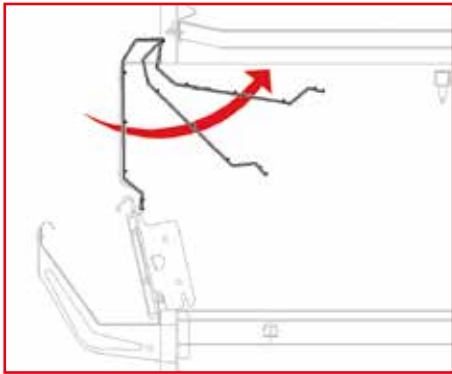
Two drinking lines (nipples) with height that can be progressively adjusted to the animals' growth have been installed in each cage.

This provides the chicks with unimpeded drinking point access at every phase of the cycle. Each nipple comes with a drop-saving cap.



## P80 BATTERY CAGE

### OPENING SYSTEM



Entry to the cage is provided by a "push-in" door type opening system.

Experience has led to the development of a handy door that permits easy access to the inside of the cage by the operator for all the operation necessary during the breeding cycle.

Various other measures make it easier to keep the animals inside the cage when the doors are opened.



## P80 COMFORT

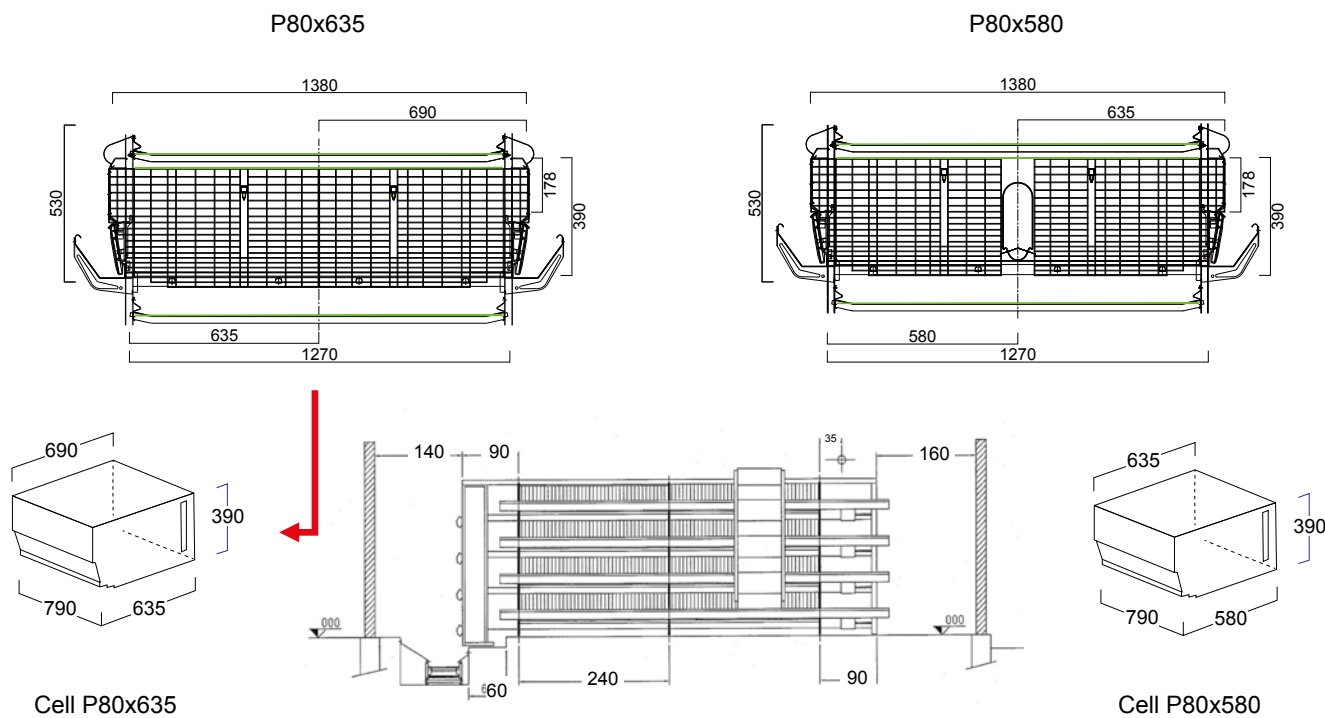
The Comfort battery cage has a pyramidal structure with 2 or 3 or 4 tiers.

Unlike the P80, the manur is removed by a scraper positioned beneath the battery or into a deep pit.





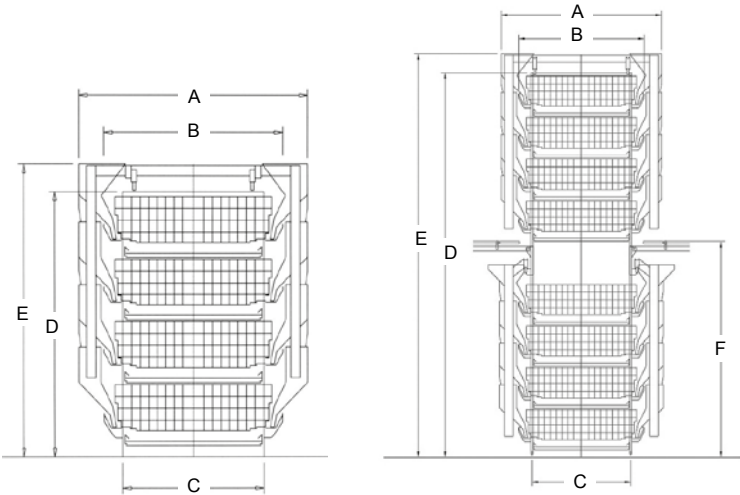
TECHNICAL FEATURES
 P80 BATTERY CAGE



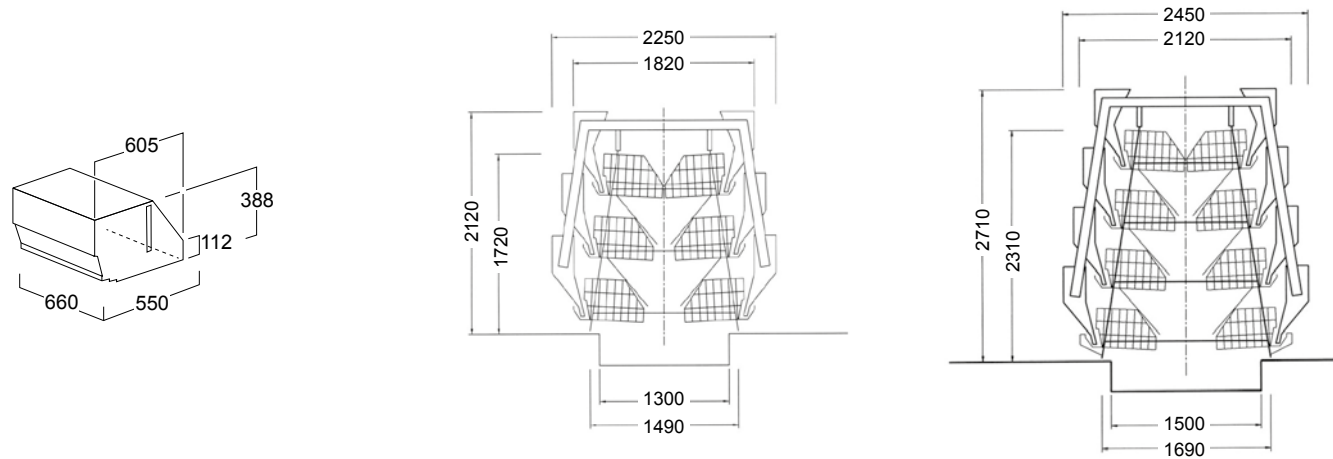
Minimun recommended measures

	3	4	5	6	3+3	3+4	4+4
"A"	2020	2020	2020	2020	2020	2020	2020
"B"	1600	1600	1600	1600	1600	1600	1600
"C"	1240	1240	1240	1240	1240	1240	1240
"D"	1760	2290	2820	3350	3880	4410	4940
"E"	1970	2500	3030	3560	4090	4620	5150
"F"					2210	2210	2740

measures expressed in millimeters



TECHNICAL FEATURES
 P80 COMFORT





# **FACCO**

**POULTRY EQUIPMENT**

**OFFICINE FACCO & C. S.p.A.**

Via Venezia, 30  
35010 Marsango (PD) Italy

**Tel.** +39 049 9698111

**Fax** +39 049 9630605

**[facco@facco.net](mailto:facco@facco.net)**

**[www.facco.net](http://www.facco.net)**

